

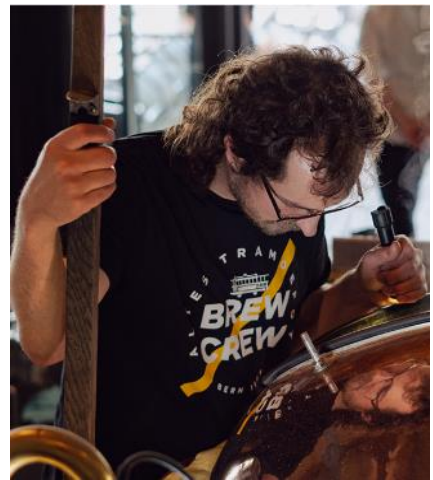


ALTES TRAMDEPOT
RESTAURANT BAR BRAUEREI

BANQUET DOCUMENTATION 2024

Thank you for considering the Altes Tramdepot for your event!

The lively & original restaurant with integrated brewery & gelateria looks back on a more than 25-year success story & is an integral part of the Bernese gastronomy scene. Drink our beer, which is lovingly brewed by hand in copper brew kettles in the middle of the restaurant. The menu is varied and seasonal. The immediate vicinity to the BärenPark, the fantastic view of Bern's old town & the river Aare as well as the convenient location makes the Altes Tramdepot a popular meeting place to be & enjoy.



INDEX

	Page
Culinarium	2
Facilities	3
Nice to know	4
Checklist	5

CULINARIUM

APERITIFS

Starting from 20 people we do serve cold and warm appetisers. Choose from our selection of finger food and leave us to calculate the portions. Aperitifs without dinner reservation can be scheduled until 17.30 hrs at the latest.

MENUS

Our menus, consisting of 3 or 4 courses, are prepared for groups of 20 or more. We shall be happy to make you an individual offer for your event.

We will gladly send our suggestions on request. Call us or use write us an e-mail.

HOME BREWED BEER

Invite your guests to an exceptional aperitif.

A home brewed Tram-Beer and a pretzel? The perfect starter in an informal evening.



The heart of the restaurant "Altes Tramdepot" is our micro-brewery. All our beers are unfiltered and brewed without chemical additives. Every year we brew approx. 3'000 hectoliters of Tram-beer.

Tram-Beer

Tram-Helles Smooth, slightly-hopped, bottom-fermented
Original gravity 12.0% / Vol. alc. 5.2%

Tram-Märzen Vienna-type beer, malty and amber-colored, bottom-fermented
Original gravity 12.5% / Vol. alc. 5.5%

Tram-Weizen Fresh, full-bodied Bavarian beer, top-fermented
Original gravity 12.5% / Vol. alc. 5.2%

Linie Null-IPA Fruity, hoppy & non-alcoholic IPA
Original gravity 5.5% / Vol. alc. max. 0.5%

Linie Null-Märzen Malty & amber – the original without alcohol
Original gravity 5.5% / Vol. alc. max. 0.5%

Brewer's Tap Throughout the year our Brew Crew creates about 30 different special beers. Please ask our staff for more information.

FACILITIES

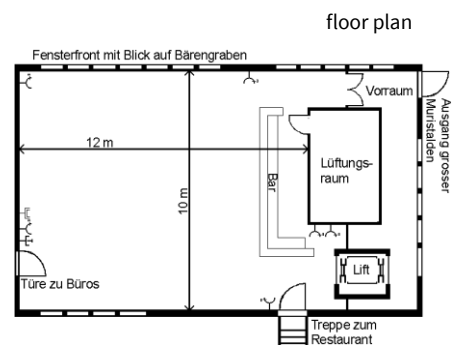
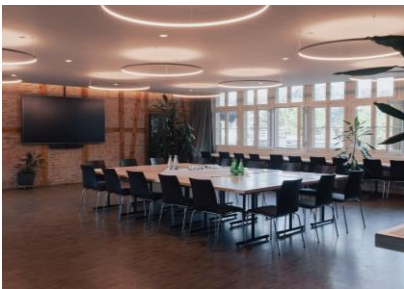
1ST FLOOR ROOM

Our room on the 1st floor can accommodate up to 80 guests and can be reserved for groups of 50 or more people. Depending on the number of guests, we decide whether to seat groups in the restaurant or in the 1st floor room.

Suitable for: company or club evenings, aperitifs, family celebrations, birthdays, weddings, confirmations, etc.

Size: 120 sqm

Details: bright and friendly atmosphere with windows
separate entrance
access with elevator, wheelchair accessible



On request, we will be happy to provide you with technical facilities.

The „Kesselhaus” can accommodate up to 42 guests and can be reserved exclusively for groups of 40 or more people. Please note that the bar will remain at our disposal.

Suitable for: class reunion, corporate events, family dining, etc.

Size: 55 sqm (approx. 5m x 12m)

Details: glasshouse in the back end of the restaurant with a bar



BRAUSTÜBLI

The „Braustübli“ can accommodate up to 32 guests and can be reserved exclusively for groups of 28 or more people.

Suitable for: class reunion, corporate events, family dining, confirmation, etc.

Size: 22 sqm (7.30m x 4.30m)

Details: little detached from the main restaurant, round table integrated



Please note that we decide where your event will take place. This decision depends on the time of the year, the weather and the confirmed number of guests. Your seat preferences will be noted and whenever possible fulfilled.

NICE TO KNOW

WORKING HOURS

The "Altes Tramdepot" is open daily. You can find our current opening hours on our homepage.

HOW TO FIND US

The "Altes Tramdepot" is located next to the Bear Pits and the BearPark. Our restaurant can be reached as follows:

By bus no 12 on the BERNMOBIL network, from the city centre direction Schosshalde/Zentrum Paul Klee. The "Bärenpark" bus stop is right in front of our restaurant.

By car or coach: The motorway exits "Wankdorf" or "Ostring" are only 5 to 10 minutes away. After leaving the motorway follow the signs to "Zentrum/Bärengarten". You will find a meter parking (Klösterlistutz) and free blue zone parking close to the restaurant (Grosser Muristalden and Aargauerstalden).

TIME CALCULATION

To make sure that your event is a pleasant and memorable one, we recommend that you allow at least 1 ½ hours for a 3-course menu and at least 2 hours for a 4-course menu.

MENU CARDS

From a menu with 3-courses we print menu cards (free of charge) with your requested logo or title. In the evening table candles are also included free of charge.

TABLE DECORATION

To give your Christmas occasion the necessary mood, we offer you white table cloths, table decoration and Christmas cookies. Price on request.

Special decorations can also be organized (at an additional charge). You may also bring your own decorations.

CHECKLIST

Our team will make every effort to ensure the success of your group event or visit. Please contact us as early as possible to discuss any special requests or requirements. The following checklist will assist you with the organization of your visit in the "Altes Tramdepot".

- type of event, date and time
- standard group menu for all participants (vegetarian dish on request)
- allergy menus (gluten/lactose intolerance)
- religious food restrictions (for example: pork)
- drink selection
- time plan (speeches, entertainment, etc.)
- seating (seating order, place cards)
- technical requirements
- number of people, vegetarians, children
- signalization at the entrance
- decorations, flowers
- menu cards (title and/or logo)
- expected timing of the end
- food catering for musicians, performers
- accounting alcoholic drinks and spirits
- method of payment and invoice address

Do you have any questions?

If so, call us or come by and we will be happy to assist you. To make sure we can take time for you, please make an appointment from Monday to Friday from 08:00 to 18:00 hrs.